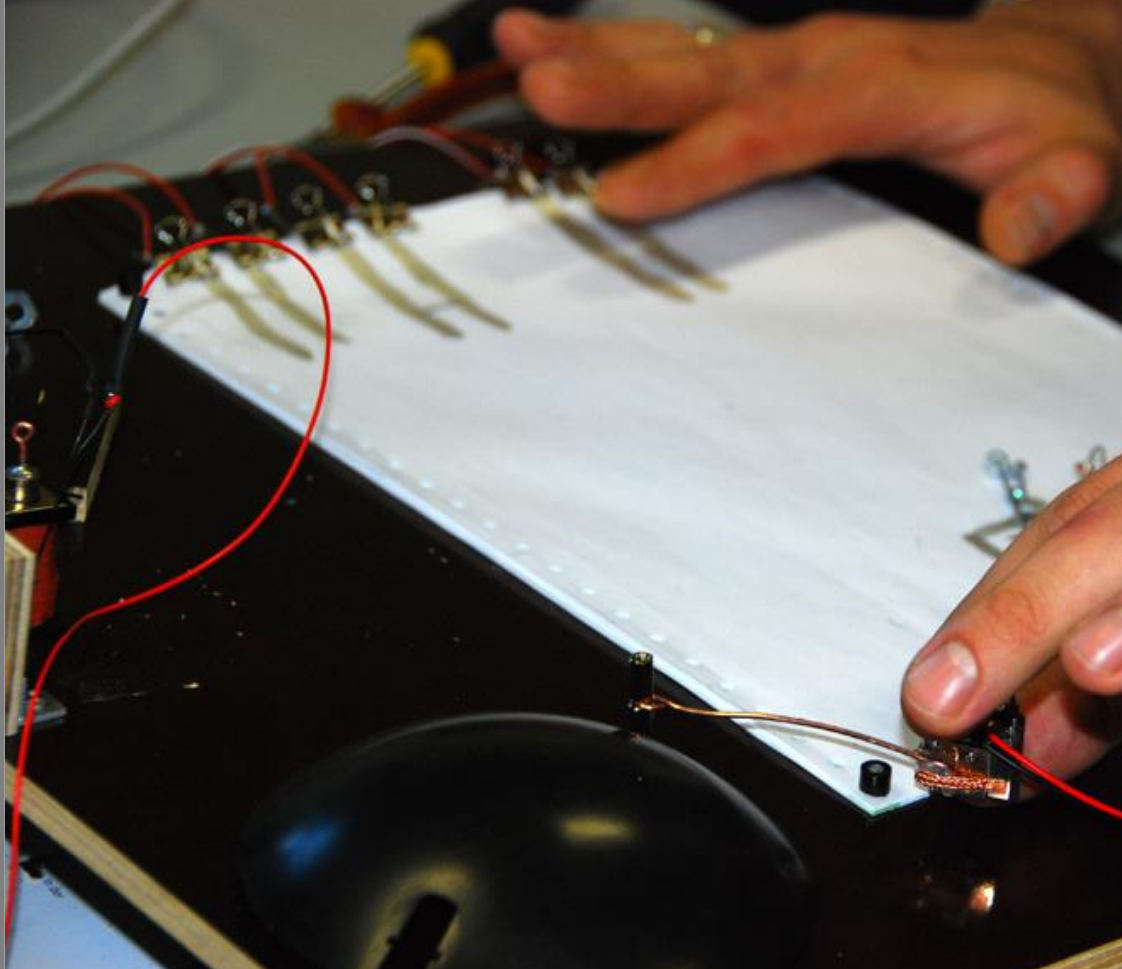


Paper Sensor



Keywords
Paper Input
Midi Control

Input
Tangible Sensors
Finger movement

Output:
Music or Visuals

Technology:
Sensors
Silver Lacquer Pen
Cramp Connections
Music Generators

Paper Sensor

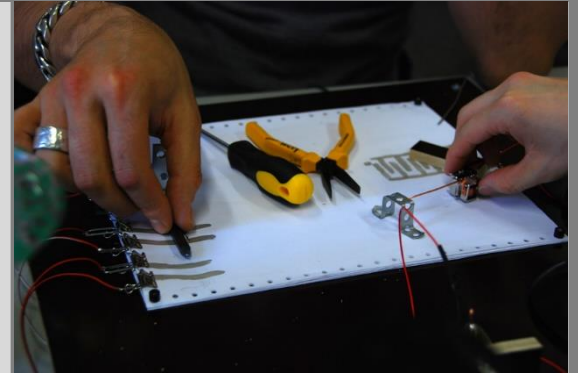
Description:

The idea of the “Paper Sensor” is to control sound on an individual storage medium: Silver Lines on continuous paper. It could also be used as a Midi-Controller for Digital Music.

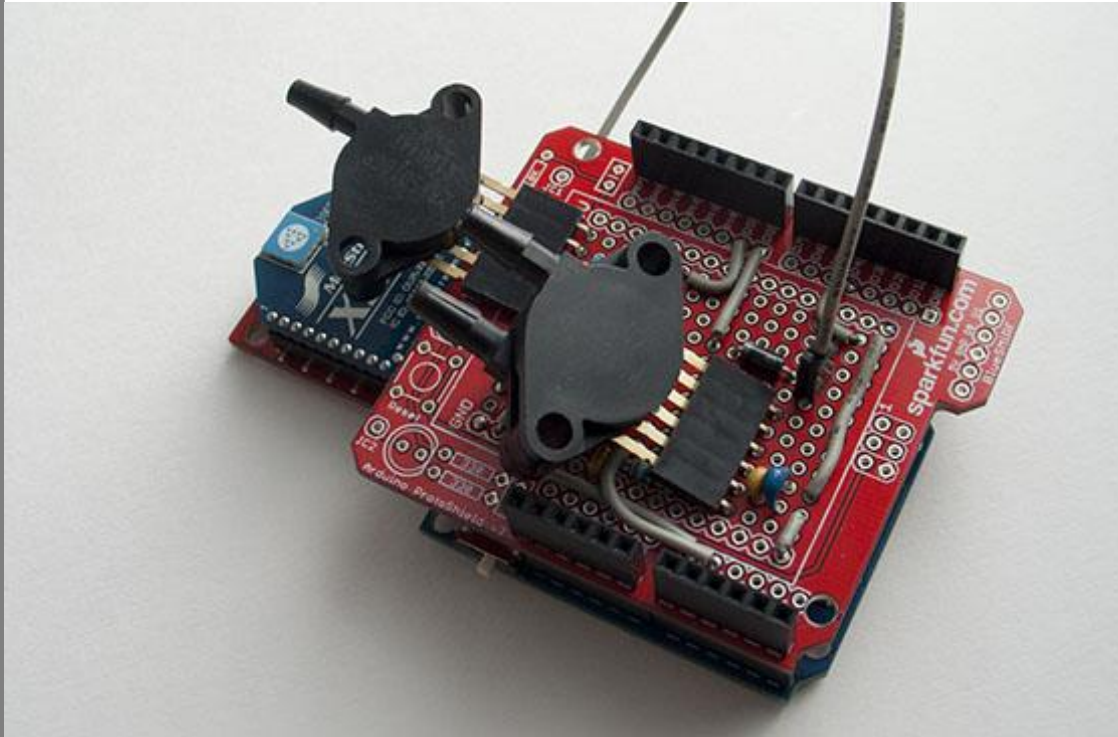
It is made up of a wooden body, a “slot” for the paper, cramp-connections to the “sound-creators” and the SensorAktor-Board. In order to fade the sound you can draw your own control-set-up on paper using silver-lacquer-pen and use your finger to lift or to drop the resistance – like a potentiometer. You can also draw buttons on the paper so that you can paint your own drum-machine-controller on paper. Thus we use continuous paper: it is an storage medium which can be changed for any purpose – if connected to the correct export-set-up.

Links:

<http://interface.khm.de/index.php/teaching/works/paper-sensor/>



Pressure Sensor



Keywords

Pressure, Push
Measurement

Input

Air/Water pressure
Compressive force
Humidity
Temperature

Output:

Analytical Data
On/Off Information

Technology:

Sensors
(depending on the
purpose)

Pressure Sensor

Description:

Pressure Sensors are found in many different devices and installations. They can be used for different purposes. From the normal push button, to the more complex measuring sensor.

There are several Types of pressure sensors available which fulfill the required demand. Like the absolute, gauge, vacuum, differential pressure sensor.

Links:

http://en.wikipedia.org/wiki/Pressure_sensor

<http://www.amsys.de/drucksensor/>

